

WP 248 Raman Spectrometer

Eliminate fluorescence background



FEATURES AND BENEFITS

- f/2.0 input to capture more light
- Superior optical design based on patented transmissive VPH grating
- Captures clean spectra in seconds
- Lens input for collimated FOV
- Custom 248.6 nm longpass filter
- Trigger option to synch with laser
- Compact, simple, & robust design

We've maximized the efficiency of our spectrometers to give you more sensitivity, better SNR, and faster measurements. Collect more light with our f/2.0 input, keep more light with our high transmission VPH gratings & diffraction-limited optics, and detect more light with scientific-grade detectors. Our build-to-print options for resolution, detector cooling, and sample coupling allow you to configure a spectrometer or system with the exact performance you need.

Wasatch Photonics offers the expertise & testing to find your optimal Raman solution. Contact us to get started!

WP 248 Raman Spectrometer Series

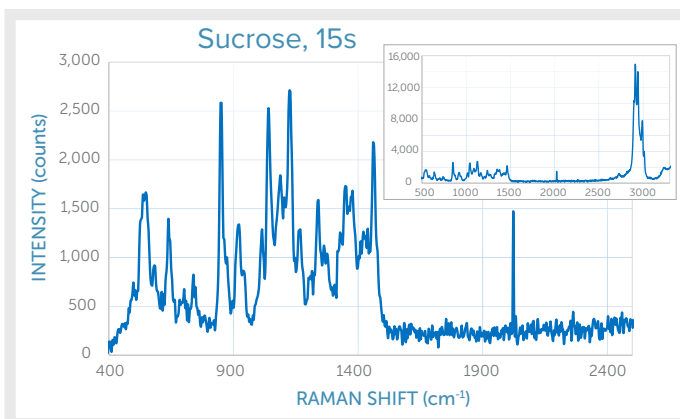
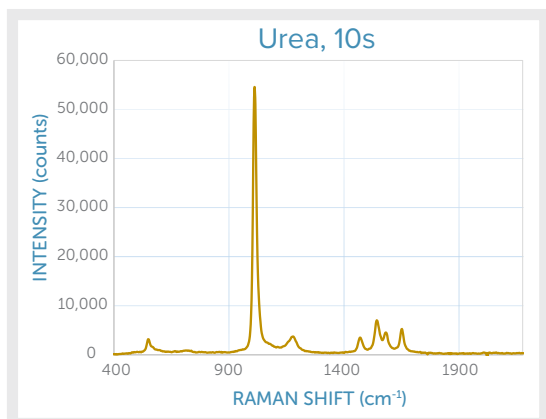
STANDARD PRODUCT SPECIFICATIONS & OPTIONS

Our build-to-print 248 nm Raman spectrometer includes a built-in longpass filter for Rayleigh scatter rejection, and is offered with choice of ambient or TEC-regulated detector, allowing you to balance your required signal to noise (SNR) and temperature stability with cost for the best possible value.

OPTICAL			
DETECTOR COOLING OPTIONS >		Ambient	TEC-Regulated
Wavenumber Range ($\lambda_{ex} = 248.6 \text{ nm}$)		400-3200 cm^{-1}	
Resolution (FWHM)	25 μm slit	14 cm^{-1}	
f-number (f/#)		2.0	
Spectrometer input		Integrated lens (free space available upon request & user-exchangeable in field)	

DETECTOR & ELECTRONICS			
DETECTOR COOLING OPTIONS >		Ambient	TEC-Regulated
Hamamatsu Detector		S10420-1006 CCD	S16011-1006 CCD
Detector Temperature		ambient	10°C
Detector Temperature Stability		-	$\pm 0.2^\circ\text{C}$
Active Pixels		1024	
Pixel Size		14 x 14 μm	
Integration Time		3 ms - 60 s	
Spectrometer Triggering		Triggering accessory for Photon Systems NeCu laser included	
Communications		USB 2.0 Type B connector	

MECHANICAL & ENVIRONMENTAL	
Integrated Lens or Free Space Coupled	
Size	30.2 x 17.9 x 7.5 cm
Weight	3.0 kg
Power Consumption	<500 mA @ 12 V
Operating Temperature	0°C to 40°C, non-condensing



WP-PS_WP248-Raman_13Aug20

