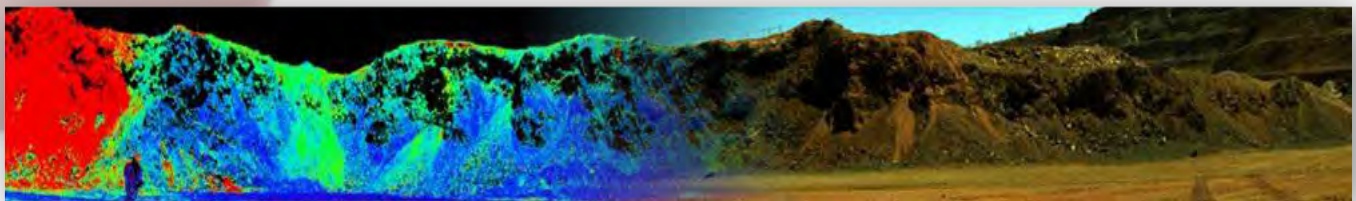
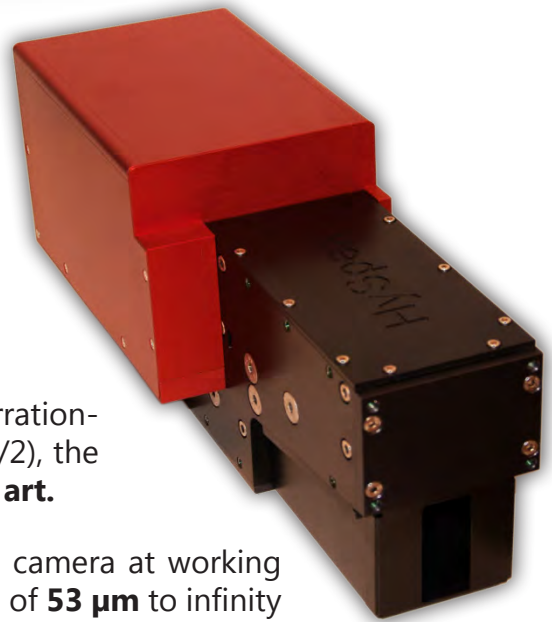


## HySpex SWIR-384

The new HySpex SWIR-384 hyperspectral camera from NEO, is developed for **field, laboratory, airborne and industrial applications**. The new state of the art MCT sensor with cooling down to 150K yields low background noise, high dynamic range and **exceptional SNR levels**.

With a max frame rate of **450 fps**, combined with an aberration-corrected optical system with high optical throughput (f/2), the **data quality, speed and sensitivity** is truly **state of the art**.

A wide range of **close-up lenses** allows the use of the camera at working distances ranging from a few cm with a spatial resolution of **53  $\mu\text{m}$**  to infinity for e.g. airborne remote sensing.



*Kaolinite abundance map (courtesy: CSIRO, Minerals Down Under Flagship Minerals Down Under Flagship)*

### Main specifications

Spectral sampling	930-2500 nm
Spatial pixels	384
Spectral channels	288
Spectral sampling	5.45 nm
FOV	16°
Pixel FOV across/along	0.73/0.73 mrad
Bit resolution	16 bit
Noise floor	150 e <sup>-</sup>
Dynamic range	7500
Peak SNR (at full resolution)	> 1100
Max speed	450 fps
Power consumption	30 W
Dimensions (l-w-h)	38 – 12– 17.5 cm
Weight	5.7 kg